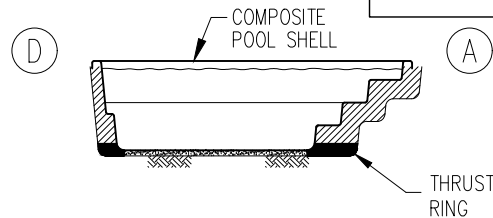


POOL PLAN  
1:100

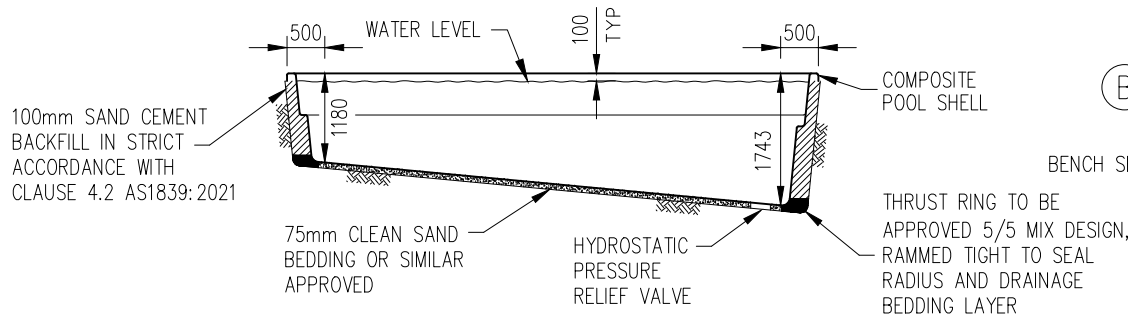
NOMINAL LENGTH = 6800mm  
NOMINAL WIDTH = 4000mm

MINOR VARIATIONS TO LENGTH  
AND WIDTH WILL OCCUR WITH  
SPECIFIC INSTALLATION.

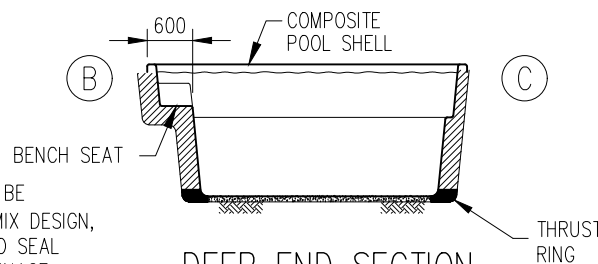
ENGINEERING RECOMMENDATIONS TO BE  
READ IN CONJUNCTION WITH THE 800  
SERIES DRAWINGS.



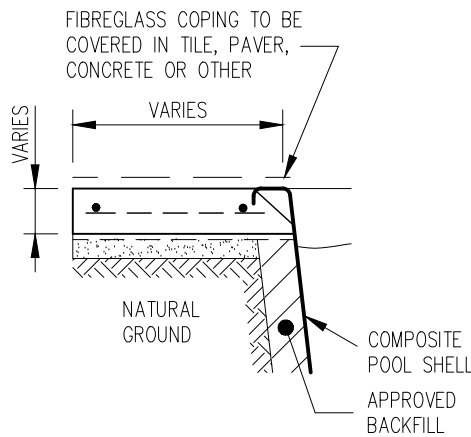
SHALLOW END SECTION  
1:100



LONGITUDINAL SECTION  
1:100

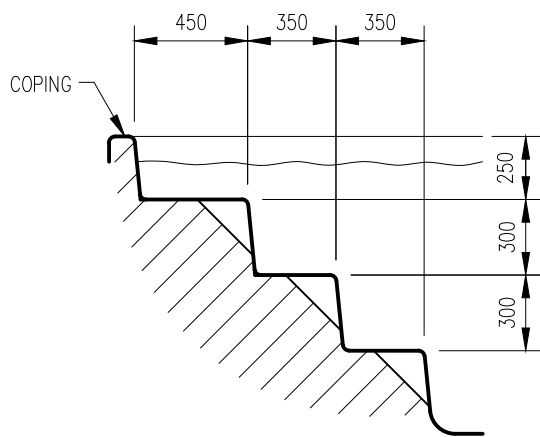


DEEP END SECTION  
1:100

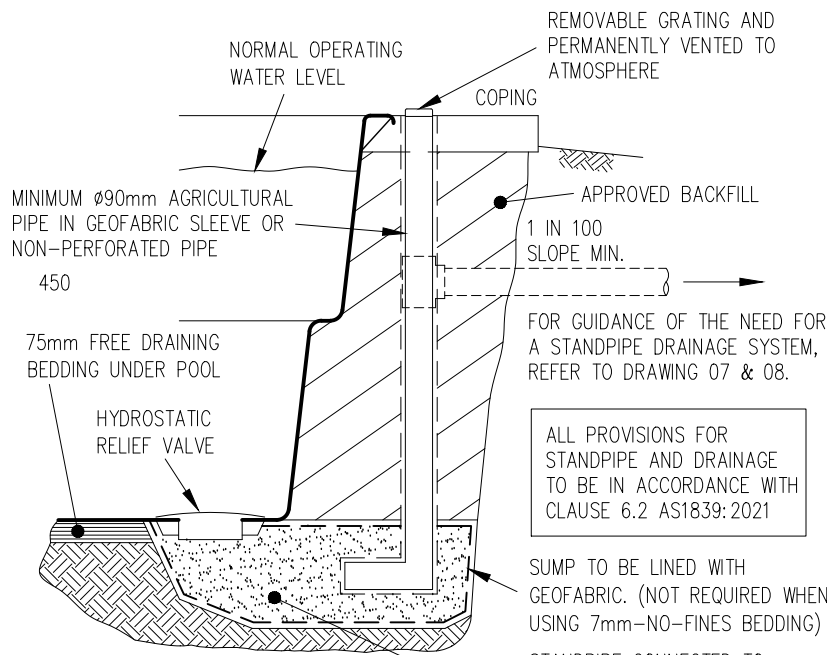


COMPASS COPINGS

(REFER TO COPING OPTIONS 200 SERIES)



TYPICAL STAIR SECTION  
N.T.S.



STANDPIPE DETAIL  
DETAILS AS PER AS1839:2021

ALL PROVISIONS FOR  
STANDPIPE AND DRAINAGE  
TO BE IN ACCORDANCE WITH  
CLAUSE 6.2 AS1839:2021

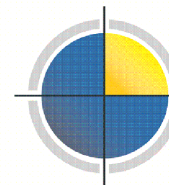
SUMP TO BE LINED WITH  
GEOFABRIC. (NOT REQUIRED WHEN  
USING 7mm-NO-FINES BEDDING)  
STANDPIPE CONNECTED TO  
HYDRO SUMP.  
SUMP TO BE 10mm-20mm  
CRUSHED STONE OR SIMILAR.  
MINIMUM BEDDING DEPTH 200mm.

1. GENERAL Design and installation to be in accordance with current AS 1838 & AS 1839, all relevant statutory by-laws, regulations and for site conditions existing or planned at the time of construction and noted on the specific site plan.
2. FOUNDATION The foundation material is to be uniform and capable of providing a working bearing capacity of 25 KPa. In particular, bearing on fill is permitted, subject to Engineer approval.
3. CONCRETE COPINGS All concrete works to comply with AS 3600  
0-1 km from coastline:  
F'c = 40 MPa 50mm cover maximum slump = 80mm  
1-50 km from coastline:  
F'c = 32 MPa 50mm cover maximum slump = 80mm  
Greater than 50 km from coastline:  
F'c = 25 MPa 50mm cover maximum slump = 80mm  
See 200 series drawings for details.
4. EMPTYING This pool must not be emptied without the express approval of Compass Pools Australia P/L or agent. Standpipes and hydrostatic relief valves are required for all installations, or otherwise to Engineers approval
5. REACTIVE SOILS The Compass Pool range is designed to suit all reactive clay conditions. Refer to the installation procedures nominated for specific area (state) (800 series drawings). If you consider your site is outside nominated site conditions contact Compass Pools Head office.
6. DRAINAGE Refer AS1838, AS1839, Compass Pools drawings 07 and 08. Particular attention is drawn to the need for drainage on sloping sites; Ø100mm Ag-Line minimum depth 600mm, fall 1:100, discharge to atmosphere. For flat flood plain sites, pool to be raised as per AS1839 and/or specific Engineers instructions. Inclusions (and exclusions) for drainage to be clearly clarified at contract. Exposure at excavation stage required to confirm the final design.
7. LAYUP Details available on specific request from Compass Pools Australia P/L.
8. DETAILS Refer to Compass Pools drawings 07, 08, 200 series and 800 series drawings for details.
9. MOVEMENT Refer to the following clauses in AS1839:2021 for installation tolerances:
  - 6.1 nominates installation tolerances for the shape of the pool.
  - 6.5 for tolerance for finished height of the pool.
  - 6.6 for tolerances of levelness of the pool.Note: Long-term or seasonal movement due to reactive clay is not considered to be an installation deviation and will vary depending on the level of reactivity but is acceptable unless it compromises the structural integrity of the pool.

COPYRIGHT

These drawings, plans and specifications and the copyright therein are the property of Compass Pools Australia Pty. Ltd. and must not be used, reproduced or copied wholly or in part without the written permission of Compass Pools Australia Pty. Ltd.

All rights reserved.



**COMPASSPOOLS**  
HOME OF THE SELF CLEANING POOL

**COMPASS POOLS AUSTRALIA PTY LTD**

ESTABLISHED 1980

ACN 086 874 222

19 School Drive, Tomago N.S.W. 2322

Telephone: + 612 49648692

Fax: + 612 49648693

**RICKARD**  
**ENGINEERING**

Specialist Civil & Structural Engineering Services

Suite 5, 121 Military Road, Neutral Bay, Sydney, NSW 2089, Australia

Phone: (+61) 2 9904 5610 www.rickardengineering.com ABN 47 164 127 468

STRUCTURAL DETAILS APPROVED BY CE RICKARD, M.Sc, FStruct.E, FIE(Aust), MIPENZ  
QLD: RPEQ 2485 VIC: PE0003927 NSW: NPER 73285 NZ: PSA3584

**SANCTUARY 7.0m**

Designed CER

Drawn NT

**143G**

CLIENT: \_\_\_\_\_

ADDRESS: \_\_\_\_\_

\_\_\_\_\_

\_\_\_\_\_

Date

Approved

/2( )